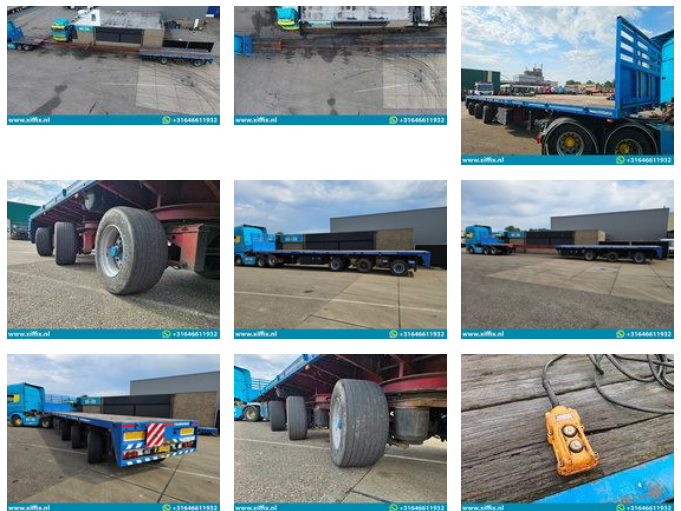


Lako 3-ass. Vlakke dubbel (2x) uitschuifbare oplegger // 3x gestuurd

General features

Brand	Lako
Subcategory	Flatbed
Construction year	1991
Date of first registration	24-07-1991
Condition	Used
Reference	14735



Characteristics

Empty weight	12.670kg
Load capacity	33.330kg
GVW	46.000kg
Serial number	0114

Lako 3-ass. Vlakke dubbel (2x) uitschuifbare oplegger // 3x gestuurd

Technical specifications

Number of axes

3

Description

Construction: 3-axle Flat double (2x) extendable trailer // 3x steering First registration date: 24-07-1991 Length trailer: 1.355 + 750 + 735 cm. Height: +- 145 cm. Width: 251 cm. Suspension: Air Number of axes: 3 pieces Number of steering axles: 3 (hydr.) Number of lift axles: 0 GVW: 46.000 kg. Tare weight: 12.670 kg. Loading capacity: 33.330 kg Tire size: 435/50 R 22, 5 Profile on average in %: 25 % Brakes: Drum 70 % MOT up to: n Brand axles: BPW Central lubrication: Yes 2x - Remote control for the steering axles

Accessories

- Central lubrication system
- Air suspension system
-
-