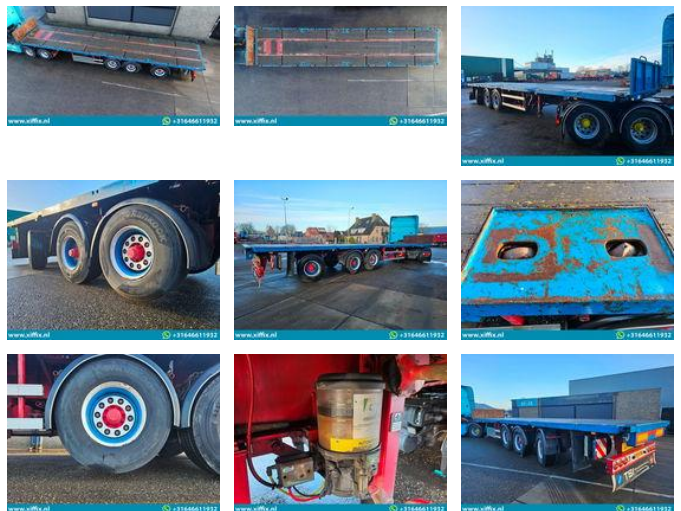


Groenewegen 3-ass. Vlakke oplegger // 1x gestuurd

General features

Brand	Groenewegen
Subcategory	Flatbed
Construction year	1996
Date of first registration	07-08-1996
Condition	Used
Reference	14583



Characteristics

Empty weight	8.100kg
Load capacity	31.900kg
GWV	40.000kg
Serial number	XL9620000T0002418

Groenewegen 3-ass. Vlakke oplegger // 1x gestuurd

Technical specifications

Number of axes 3

Description

Construction: 3-axle Flat trailer // 1x steering First registration date: 07-08-1996 Length trailer: 1.240 cm. Height: +- 140 cm. Width: 255 cm. Suspension: Air Number of axles: 3 pieces Number of steering axles: 1 (3e, rod) Number of elevator shafts: 1 (1e) GVW: 40.000 kg. Tare weight: 8.100 kg. Loading capacity: 31.900 kg Tire size: 425/65 R 22, 5 Profile average in %: 50 % Brakes: Drum 50% MOT up to: 13-04-2025 Brand axles: BPW Central lubrication: Yes

Accessories

- ABS
- Central lubrication system
- EBS
-
- Air suspension system
-