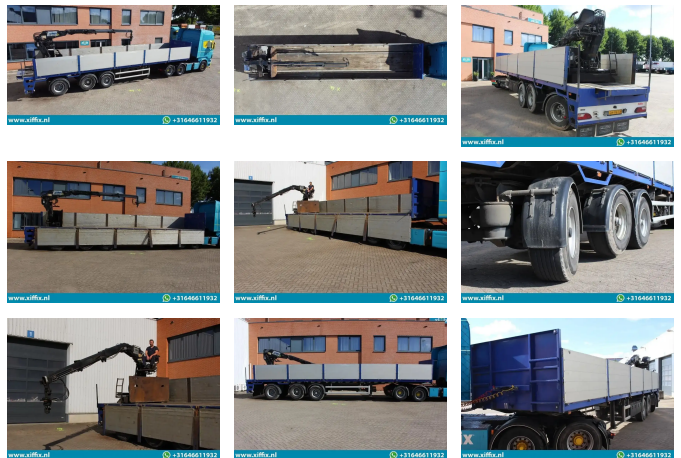


## Floor 3-ass. Steenoplegger met Kennis 14 ton/mtr. Kraan // 13425

### General features

Brand	Floor
Subcategory	Drop side
Construction year	2005
Date of first registration	03-01-2005
Condition	Used
Reference	13425



### Characteristics

Empty weight	7.680kg
Load capacity	37.320kg
GWV	45.000kg
Serial number	XLT0000000W021657

# Floor 3-ass. Steenoplegger met Kennis 14 ton/mtr. Kraan // 13425

## Technical specifications

Number of axes

3

## Description

Construction: 3-axle Stone trailer with Kennis 14 ton/mtr Crane First registration date: 03-01-2005 Length trailer: 1.280 + 30 cm. Number of axes: 3 Number of steering axles: 1 (3e, cable) Number of elevator shafts: 1 (2e) GVW: 45.000 kg. Own weight trailer: 7.680 kg. Payload: 37.320 kg. Tyre size: 425/65 R 22,5 Profile on average in%: 40% Brakes: Drum 30 % Apk up to: n Brand axles: BPW Central lubrication: Yes Crane: Kennis 14 ton/mtr. Year built: 2005 Crane profile: 147 cm. Control: Levers Single pull-out: 2x Support legs: Yes

## Accessories

- 
- 
- Central lubrication system
- Air suspension system
- ABS
- EBS